



# FME2404 - 2400lb Flake Ice Machine

Modular Flake Ice Machine with AutoSentry™

## Features and Benefits

- AutoSentry™ Monitoring System constantly checks workload on gearbox shutting down system before a problem develops preventing costly repairs.
- Electrical conductivity water sensor eliminates low or no water failures and cannot be affected by adverse water conditions.
- Plastic drain pan with larger outlet provides greater ability to quickly channel water away preventing particle build-up and rust.
- Rust and restriction free drain system features one-piece plastic drain tubes with larger ID for obstruction-free water flow.
- Durable, high grade stainless steel construction with massive, self-aligning spherical roller bearings; patented double-flight auger that evenly distributes the load; and heavy duty direct drive gearbox for high reliability and long life.
- Industry leading 3 year parts and labor warranty.



## 24 Hour Volume Production

Air Cooled

70°F/21°C 50°F/10°C	Air Water	90°F/32°C 70°F/21°C
2455/1114 lb/kg		1792/813 lb/kg



## Modular Bin Options

Bin Application

Model Number*	Dimensions W" x D" x H"	Capacity lb/kg	Finish	Ship Weight lb/kg
B842S	42 x 34 x 44**	778/353	Stainless Steel	190/86
B948S	48 x 34 x 44**	893/406	Stainless Steel	209/95
BH1100BB	48 x 34 x 50**	1100/499	SS w/GBB†	280/127
BH1100SS	48 x 34 x 50**	1100/499	Stainless Steel	280/127
BH1300BB	60 x 34 x 50**	1400/635	SS w/GBB†	310/140
BH1300SS	60 x 34 x 50**	1400/635	Stainless Steel	310/140
BH1600BB	60 x 34 x 62**	1755/796	SS w/GBB†	370/168
BH1600SS	60 x 34 x 62**	1755/796	Stainless Steel	370/168

\* See price list for Bin Top. \*\* Add 6" Height for bin legs.  
† Stainless steel with galvanized back & bottom.



B948S



BH1300BB  
BH1300SS



## Flake Ice



Cools more quickly than other ice forms. Ideal for seafood and produce displays.



## Certification



## Warranty

- 3 years parts and labor on all components.
- 5 years parts on the compressor.
- Warranty valid in North, South & Central America for commercial installations.
- Contact factory for warranty in other regions.
- Residential Applications: 1 year parts and labor

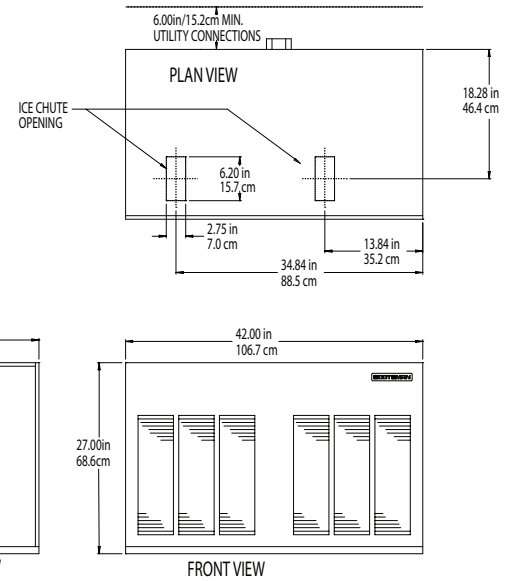
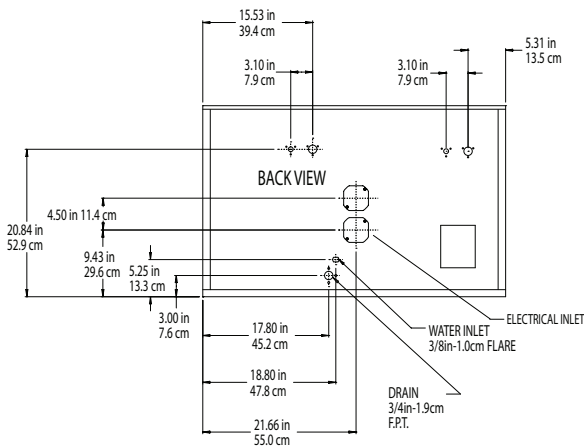
FME2404 - 2400lb Flake Ice Machine



• 101 Corporate Woods Parkway, Vernon Hills, IL 60061 •  
• 1-800-SCOTSMAN • Fax: 847-913-9844 • [www.scotsman-ice.com](http://www.scotsman-ice.com) • [customer.relations@scotsman-ice.com](mailto:customer.relations@scotsman-ice.com) •

# FME2404 - 2400lb Flake Ice Machine

Modular Flake Ice Machine with AutoSentry™



Installation Note: On air cooled models, air enters through the front and exits out the back of the unit.

FME2404 - 2400lb Flake Ice Machine



## Specifications

Model Number	Condenser Unit	Basic Electrical Volts/Hz/Phase	Max. Fuse Size or HACR Circuit Breaker (amps)	Circuit Wires	Min. Circuit Ampacity	Energy Consumption kWh/100 lb (45.4 kg) 90°F(32°C)/70°F(21°C)	Water Usage Gallons/100 lb (liters/45.4 kg)	
							Potable	Condenser 90°F(32°C)/70°F(21°C)
FME2404AS-32	Air	208-230/60/1	25	2	21.0	3.35	12.0/45.5	-



## All Models

### Dimensions (W x D x H):

Unit: 42" x 24" x 27"  
(106.7 x 61.0 x 68.6 cm)

Shipping Carton: 45.5" x 27.5" x 32"  
(115.6 x 69.85 x 81.3 cm)

Shipping Weight: 395 lb / 179 kg

BTUs per hour: 15,800

Refrigerant: R-404A



## Operating Requirements

	Minimum	Maximum
Air Temperatures	50°F (10°C)	100°F (38°C)
Water Temperatures	40°F (4.4°C)	100°F (38°C)
Remote Cond. Temps	-20°F (-29°C)	120°F (49°C)
Water Pressures	20 PSIG (1.4 bar)	120 PSIG (5 bar)
Electrical Voltage	-5%	+10%

Specifications and design are subject to change without notice.

Scotsman recommends all ice machines have water filtration. See Scotsman water filter specification sheet for details.